



**Government of India
Ministry of Earth Sciences
India Meteorological Department**



Press Release

Date: 24th June, 2025

Time of Issue: 1400 hours IST

Subject: i) Increase in rainfall activity with isolated heavy to very heavy falls over northwest India from 25th June onwards.

ii) Heavy to very heavy rainfall activity likely to continue over many parts of central, east & northeast India during next 7 days with isolated extremely heavy rainfall over Konkan, Madhya Maharashtra, Gujarat Region on 24th June.

Southwest Monsoon (Annexure I):

- ❖ Southwest monsoon has further advanced over remaining parts of north Arabian Sea, some more parts of West Uttar Pradesh, some parts of Haryana; Chandigarh; remaining parts of Himachal Pradesh & Jammu and some more parts of Punjab.
- ❖ The Northern Limit of Monsoon continues to pass through 25.0°N/60.0°E, 25.0°N/65.0°E, 25.5°N/70.0°E, Barmer, Jodhpur, Jaipur, Agra, Rampur, Bijnor, Karnal, Halwara and 33.0°N/70.5°E.
- ❖ Conditions are favourable for further advance of Southwest monsoon over some more parts of Rajasthan, Punjab, Haryana; Delhi and remaining parts of West Uttar Pradesh during next 36 hours.

Realised weather during past 24 hours till 0830 hours IST of today, the 24th June, 2025 (Annexure II):

- ❖ **Heavy to very heavy rainfall at some places with extremely heavy falls** recorded at isolated places over Sub-Himalayan West Bengal & Sikkim; **heavy to very heavy rainfall with extremely heavy falls** at isolated places over Gujarat Region and Konkan.
- ❖ **Heavy to very heavy rainfall** recorded at isolated places over East Rajasthan, Uttarakhand, Punjab, Haryana, Uttar Pradesh, Madhya Pradesh, Madhya Maharashtra, Arunachal Pradesh, Assam & Meghalaya; **Heavy rainfall** at isolated places over Odisha, Karnataka and Manipur.
- ❖ **Thunderstorm accompanied with Squally/Gusty winds with speed 60-80 kmph** at isolated places over Madhya Maharashtra; **40-60 kmph** at isolated places over Marathwada, Andaman & Nicobar Islands, Konkan, Himachal Pradesh, Haryana, West Madhya Pradesh, Punjab.

For more details of realised weather, kindly refer [Annexure II](#),

i. Weather Systems, Forecast and Warnings (refer to Annexure III & IV):

- ❖ An upper air cyclonic circulation lies over central parts of south Uttar Pradesh extending upto middle tropospheric levels tilting southwards with height.
- ❖ A **trough runs** from the above cyclonic circulation over central parts of south Uttar Pradesh to northwest Bay of Bengal across northeast Madhya Pradesh, Jharkhand & north Odisha in lower tropospheric levels.
- ❖ A **trough** runs from Punjab to north Bangladesh across the above cyclonic circulation over central parts of south Uttar Pradesh in lower tropospheric levels.
- ❖ A **trough** runs from northeast Arabia Sea to the above cyclonic circulation over central parts of south Uttar Pradesh in lower tropospheric levels.
- ❖ An **upper air cyclonic circulation** lies over south Jharkhand & neighbourhood in lower & middle tropospheric levels tilting southwards with height.
- ❖ An **upper air cyclonic circulation** lies over central Assam & neighbourhood in lower tropospheric level.
- ❖ Under the influence of these systems, the following weather is likely:

West India:

- ✓ **Extremely heavy rainfall (>20 cm/24 hours) likely at isolated places over Konkan, Madhya Maharashtra, Gujarat Region on 24th June.**

- ✓ **Very heavy rainfall** at some places likely over Konkan & Goa, Madhya Maharashtra, Gujarat region and isolated heavy rainfall over Saurashtra & Kutch during 24th-30th June.
- ✓ Light/moderate rainfall at most/many places likely over Gujarat State, Konkan & Goa, Madhya Maharashtra, Marathawada during 24th-30th June.

Northwest India:

- ✓ Isolated **heavy rainfall** likely over Punjab, Haryana, Himachal Pradesh, Uttarakhand, West Uttar Pradesh, Rajasthan during 24th-30th; Jammu-Kashmir-Ladakh-Gilgit-Baltistan-Muzaffarabad during 25th-27th; East Uttar Pradesh during 27th-30th June with **very heavy rainfall** over Uttarakhand during 24th-27th, West Rajasthan on 27th; East Rajasthan on 24th & 27th; Haryana, Punjab on 25th & 26th, West Uttar Pradesh on 25th & 27th; Jammu-Kashmir-Ladakh-Gilgit-Baltistan-Muzaffarabad on 25th June.
- ✓ Light/moderate rainfall at most/many places accompanied with **thunderstorm, lightning & gusty winds speed reaching 30-40 kmph** likely over Northwest India during 24th-30th June.

East & Central India:

- ✓ Isolated **heavy rainfall** over Bihar, Jharkhand, Odisha, Chhattisgarh during 24th-28th, Vidarbha on 24th & 25th, Gangetic West Bengal during 25th-27th, Sub-Himalayan West Bengal & Sikkim on 24th, 25th, 28th & 29th June with **very heavy rainfall** over Madhya Pradesh, Sub-Himalayan West Bengal & Sikkim on 24th; Bihar on 28th; Jharkhand on 26th, Odisha on 25th & 26th June.
- ✓ Light/moderate rainfall at most/many places accompanied with **thunderstorm, lightning & gusty winds speed reaching 40-50 kmph** likely over Andaman & Nicobar Islands; Madhya Pradesh, Vidarbha, Chhattisgarh, Gangetic West Bengal, Bihar, Jharkhand, Odisha during 24th-30th June.

Northeast India:

- ✓ Light/moderate rainfall at many/most places accompanied with **thunderstorm, lightning and isolated heavy to very heavy rainfall** likely to continue over Northeast India during next 7 days.

South Peninsular India:

- ✓ Isolated **heavy rainfall** likely over Kerala, Karnataka during 24th-28th; Coastal Andhra Pradesh & Yanam on 27th; Tamil Nadu on 27th & 28th June with very heavy rainfall Interior Karnataka on 24th; Coastal Karnataka during 24th-26th June.
- ✓ **Strong surface winds** (speed reaching 40-60 kmph) very likely over Karnataka, Coastal Andhra Pradesh & Yanam, Rayalaseema, Telangana during 24th-28th June.
- ✓ Light/moderate rainfall at many/some places over Kerala & Mahe, Lakshadweep, Coastal Karnataka; isolated to scattered rainfall accompanied with isolated **thunderstorm, lightning** over Coastal Andhra Pradesh & Yanam, Telangana, Interior Karnataka during 24th-30th June.

Heat wave warning:

Heat wave conditions likely over Jammu division on 24th June.

Fishermen Warnings:

- ❖ Fishermen are advised to avoid venturing into the following from 22nd to 26th June 2025:

Arabian Sea:

- ❖ Fishermen are advised not to venture over Along and off Gujarat coast for day 1 (24th June); off south Gujarat coast for day 2 to day 4 (25th - 28th June); Konkan, Goa coasts for day 1 & day 2 (24th & 25th June), off Konkan, Goa coasts for day 3 to day 4 (26th & 27th June); along and off Karnataka coast for day 1 to day 3 (24th to 27th June); along and off Kerala coast for day 3 (26th June).
- ❖ Fishermen are advised not to venture along and off the Somalia coast and adjoining sea areas, Oman and adjoining Yemen coast & adjoining sea area; over central & adjoining north, south Arabian Sea for day 1 to day 5 (24th - 29th June); some parts of northeast Arabian Sea for day 1 (24th June); over Lakshadweep area for day 3 (26th June).

Bay of Bengal:

- ❖ Fishermen are advised not to venture over most parts of central Bay of Bengal along and off north Andhra Pradesh coast for day 1 (24th June); along and off Odisha and West Bengal coasts for day 2 and day 3 (25th & 26th June); many parts of central Bay of Bengal for day 2 (25th June); some parts of central Bay of Bengal for day 5 (28th June); some parts of southwest bay of Bengal for day 3 (26th June).
- ❖ Fishermen are advised not to venture over the Gulf of Mannar for day 4 and day 5 (27th & 28th June)
- ❖ Fishermen are advised not to venture over the Andaman Sea from day 1 (24th June).
- ❖ Total suspension of fishing operations is suggested over above mentioned areas and dates.

ii. Weather conditions and forecast over Delhi/NCR during 24th June to 27th June, 2025 (Annexure V)

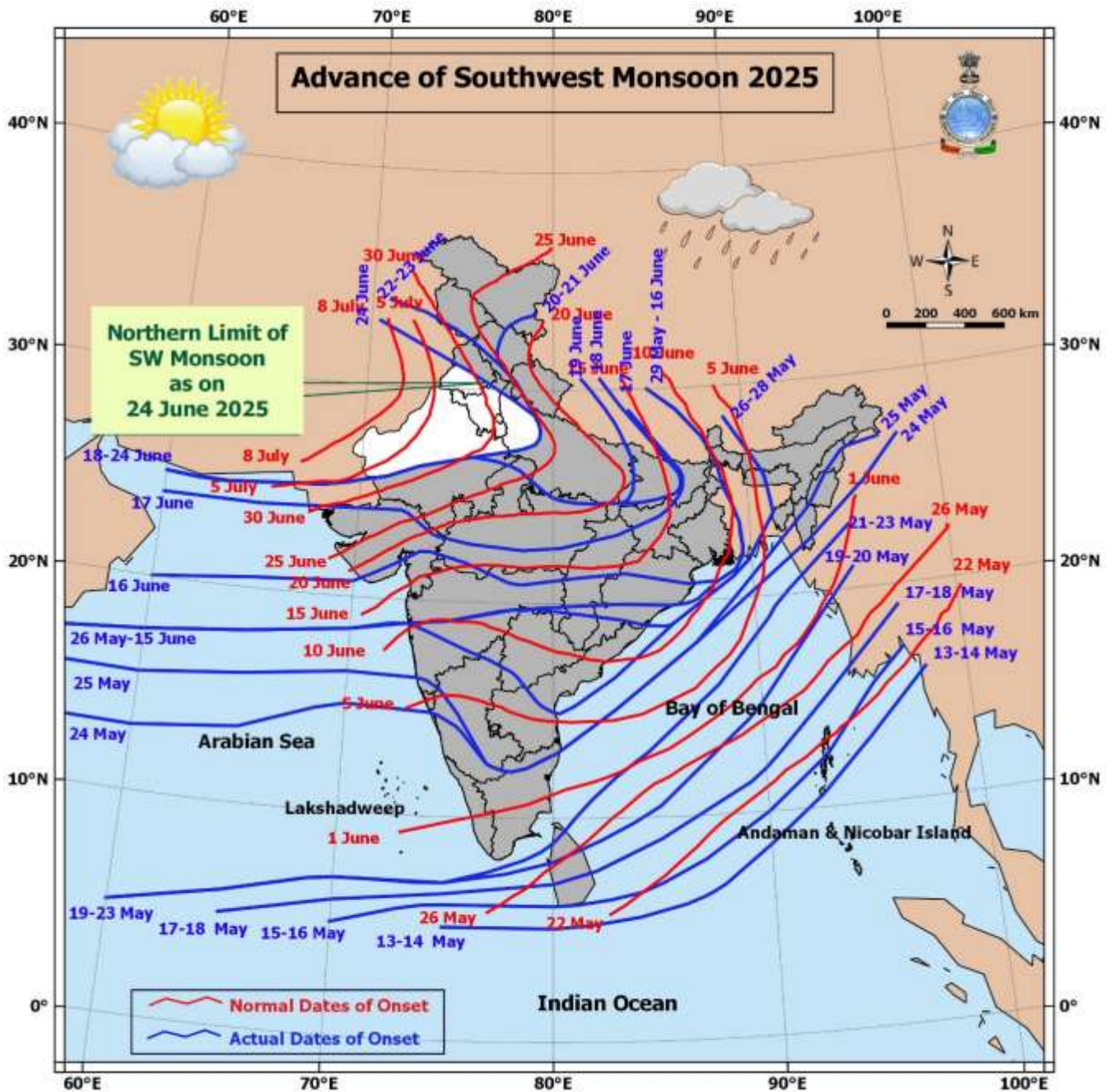
For more details, kindly refer National Weather Bulletin:

https://mausam.imd.gov.in/responsive/all_india_forecast_bulletin.php

For District wise warnings refer: <https://mausam.imd.gov.in/responsive/districtWiseWarningGIS.php>

ANNEXURE I

0



n

Significant weather reported during past 24 hours till 0830 hours IST of today:**Rainfall recorded (in cm) reported during past 24 hours till 0830 hours IST of today, the 24th June:**

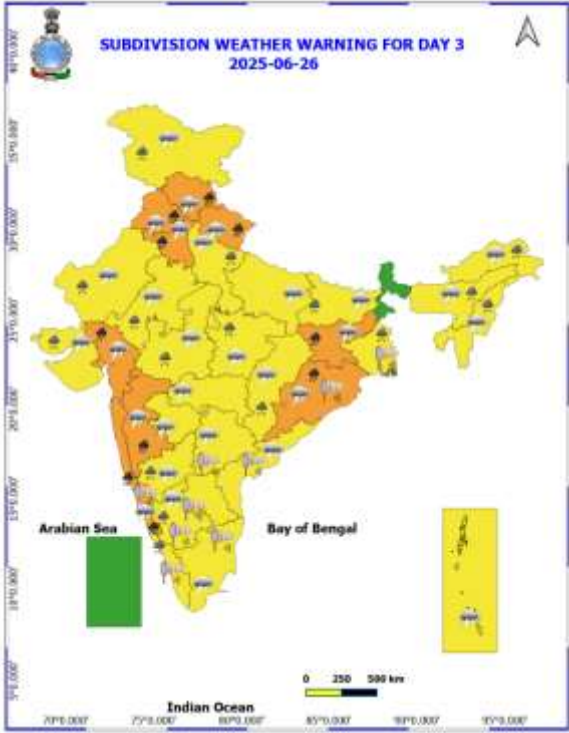
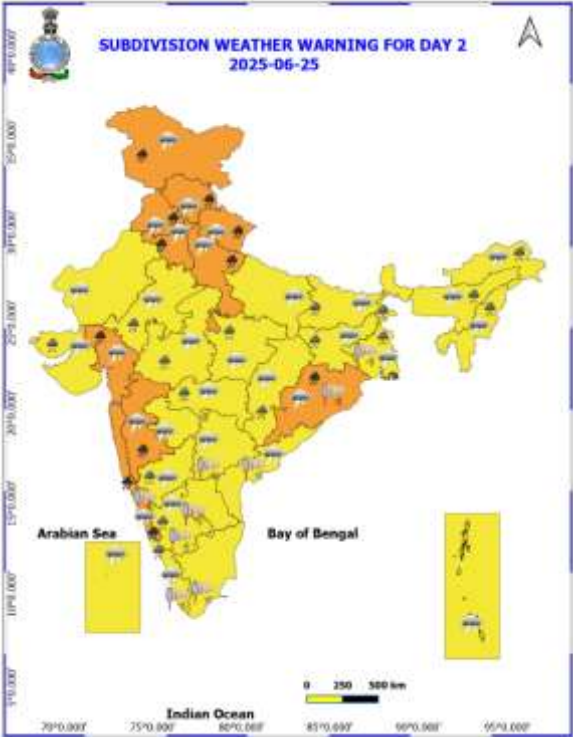
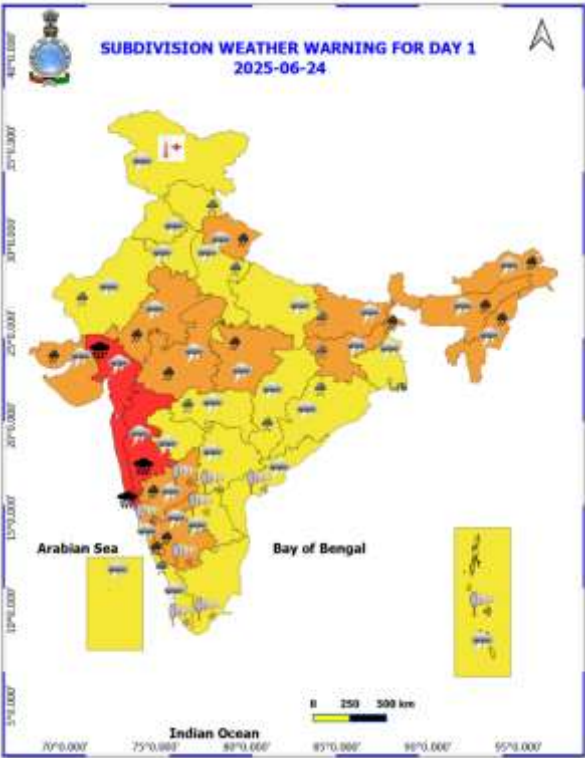
- ❖ **Sub Himalayan West Bengal & Sikkim:** Kumargram (dist Alipurduar) 28; Gajoldoba (dist Jalpaiguri) 25; Alipurduar PTO (dist Alipurduar) 23; Saraswatipur Tea Estate (dist Jalpaiguri) 21; Sevoke (dist Darjeeling), Patkapara Tea Estate (dist Alipurduar) 20 Each; Sankos Tea Estate (dist Alipurduar) 18; Sankosh (dist Cooch Behar), Leesh River Tea Garden (dist Jalpaiguri) 17 Each; Ghish (dist Jalpaiguri), Oodlabari Tea Estate (dist Jalpaiguri), Kumargram Tea Estate (dist Alipurduar) 16 Each; Barobhisha (dist Alipurduar), Siliguri PTO (dist Darjeeling), Newlands Tea Garden (dist Alipurduar) 15 Each; Suryasen Mahavidyalaya, (dist Darjeeling), Chel (dist Jalpaiguri), Kailashpur Tea Estate (dist Jalpaiguri), Washabari Tea Estate (dist Jalpaiguri) 14 Each; Chepan (dist Alipurduar) 13; Champasari (dist Darjeeling), Kumlai T.e. (dist Jalpaiguri) 12 Each; Cooch Behar (dist Cooch Behar), Anandpur Tea Estate (dist Jalpaiguri), Bhatkawa Tea Estate (dist Jalpaiguri), Aryaman Tea Estate (dist Alipurduar) 11 Each;
- ❖ **Gujarat Region:** Kamrej (dist Surat) 27; Bardoli (dist Surat) 26; Palsana (dist Surat) 24; Khanvel (dist Dadara & Nagar Haveli) 18; Tilakwada (dist Narmada) 17; Vyara (dist Tapi) 16; Narmada Kvk AWS (dist Narmada) 15; Olpad (dist Surat), Ukai (dist Surat) 14 Each; Mahuva (dist Surat), Madhbun (dist Dadara & Nagar Haveli), Dolvan (dist Tapi), Borsad (dist Anand) 13 Each; Mandvi (dist Surat), Surat City (dist Surat) 12 Each; Choryasi (dist Surat) 11; Valod (dist Tapi), Songadh (dist Tapi) 10 Each; Daman (dist Daman), Mangrol (dist Surat) 9 Each;
- ❖ **Konkan & Goa:** Jawhar (dist Palghar) 23; Vikramgad (dist Palghar) 20; Mokheda - Fmo (dist Palghar) 19; Khalapur (dist Raigad), Vasai (dist Palghar) 17 Each; Matheran (dist Raigad) 16; Roha (dist Raigad) 15; Sudhagad Pali (dist Raigad), Bhiwandi (dist Thane) 14 Each; Poladpur (dist Raigad) 13; Panvel ARG (dist Raigad), Mandangad (dist Ratnagiri), Pen (dist Raigad), Dahanu (dist Palghar) 10 Each;
- ❖ **Madhya Maharashtra:** Lonavala ARG (dist Pune) 18; Mahabaleshwar (dist Satara) 16; Radhanagari (dist Kolhapur), Igatpuri (dist Nashik) 14 Each; Gaganbawada (dist Kolhapur) 13; Ajra (dist Kolhapur), Ozharkheda - Fmo (dist Nashik) 12 Each; Chandgad (dist Kolhapur) 10; Trimbakshwar (dist Nashik), Harsul - Fmo (dist Nashik) 9 Each; Dhadgaon/Akrani- Hydro (dist Nandurbar), Shahuwadi (dist Kolhapur), Velhe (dist Pune) 8 Each;
- ❖ **East Rajasthan:** Mangrol (dist Baran) 18; Shahabad (dist Baran) 17; Kishanganj (dist Baran) 11; Baran (dist Baran), Khandar SR (dist Sawai Madhopur) 9 Each;
- ❖ **Assam & Meghalaya:** Gossaigaon (dist Kokrajhar), Gossaigaon AWS (dist Kokrajhar) 17 Each; Tangla ARG (dist Udalguri) 12; Majbat (dist Udalguri), Mazbat ARG (dist Udalguri) 8 Each; Cherrapunji(rkm) (dist East Khasi Hills), N.lakhimpur/Lilabari (dist Lakhimpur), Kajolgaon AWS (dist Chirang), Neamatighat (dist Jorhat) 7 Each;
- ❖ **Coastal Karnataka:** Siddapura (dist Udupi) 13; Castle Rock (dist Uttara Kannada) 10; Kadra (dist Uttara Kannada) 8; Banavasi (dist Uttara Kannada) 7;
- ❖ **West Madhya Pradesh:** Karhal (dist Sheopur) 12; Kolaras (dist Shivpuri) 11; Sheopur-aws (dist Sheopur) 9; Pohri (dist Shivpuri), Badoda (dist Sheopur) 8 Each;
- ❖ **Arunachal Pradesh:** Bhalukpong (dist West Kameng) 12; Tuting (dist Upper Siang) 8; Basar AWS (dist West Siang), Basar (dist West Siang) 7 Each;
- ❖ **Punjab:** Lohand (dist Rupnagar) 12; Khanna (dist Ludhiana) 10; Ludhiana (dist Ludhiana) 7;
- ❖ **Haryana-Chandigarh-Delhi:** Shahbad (dist Kurukshetra) 12; Nilokheri (dist Karnal), Babain REV (dist Kurukshetra) 10 Each; Rewari (dist Rewari), Kurukshetra (dist Kurukshetra), Thanesar (dist Kurukshetra) 9 Each; Indri (dist Karnal) 8; Bawal AWS (dist Rewari), Tajewala (dist Yamuna Nagar) 7 Each;
- ❖ **Uttarakhand:** Sama (dist Bageshwar) 12; Haripur (dist Dehradun) 10; Rudraprayag (dist Rudraprayag) 8;
- ❖ **Bihar:** Galgalia (dist Kishanganj) 12; Areraj (dist East Champaran) 9; Rosera (dist Samastipur) 8; Taibpur (dist Kishanganj), Chatia (dist East Champaran), Pothia (dist Kishanganj), Kargahar (dist Rohtas) 7 Each;
- ❖ **Odisha:** Tiring (dist Mayurbhanj) 10; Kshipur (dist Rayagada), Kaptipada (dist Mayurbhanj), Daringibadi (dist Kandhamal) 7 Each;
- ❖ **North Interior Karnataka:** Khanapur (dist Belagavi) 10; Londa (dist Belagavi) 7;
- ❖ **South Interior Karnataka:** Agumbe Emo (dist Shivamogga) 9; Somwarpet (dist Kodagu), Kottigehara (dist Chikkamagaluru) 7 Each;
- ❖ **East Madhya Pradesh:** Chindwara-aws (dist Chindwara), Kumdam (dist Jabalpur), Bilaspur (dist Umaria) 8 Each; Malanjkhanda (dist Balaghat), Shahpura (dist Dindori), Bargi (dist Jabalpur) 7 Each;
- ❖ **Telangana:** Dahegaon (dist Kumaram Bheem) 7;
- ❖ **Chhattisgarh:** Chando (dist Balrampur), Samari (dist Balrampur) 7 Each; **Vidarbha:** Bhamragad (dist Gadchiroli) 7.

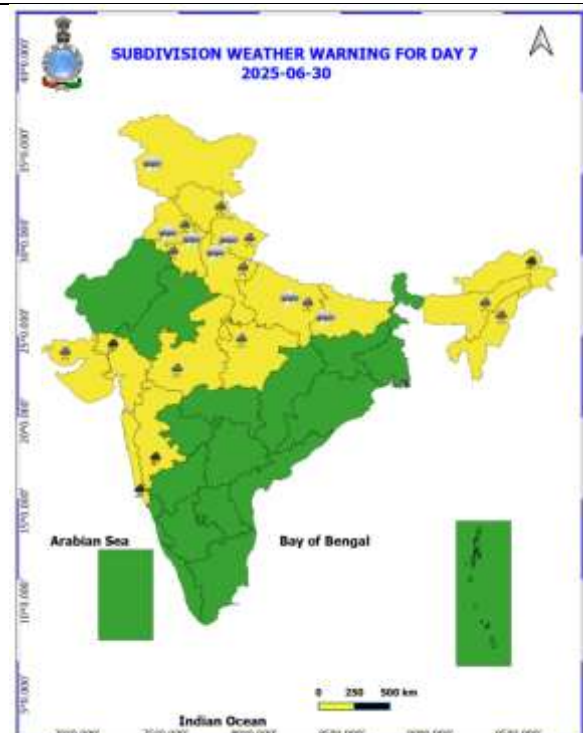
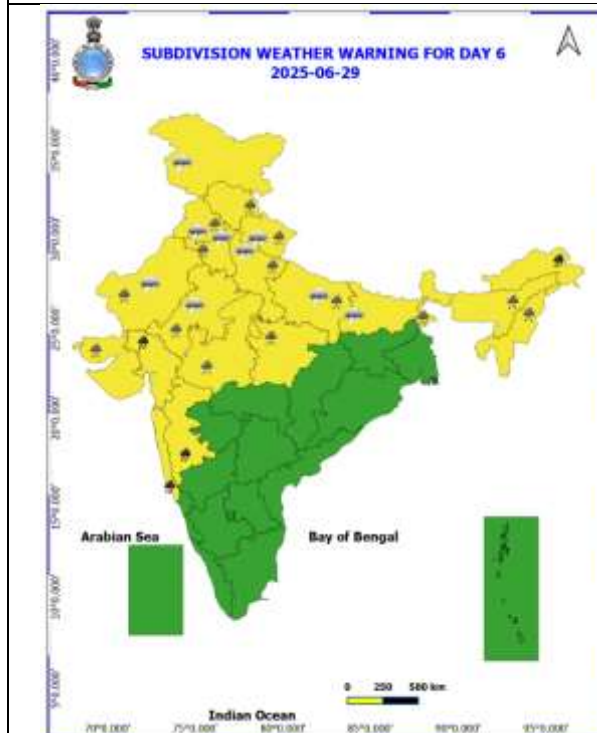
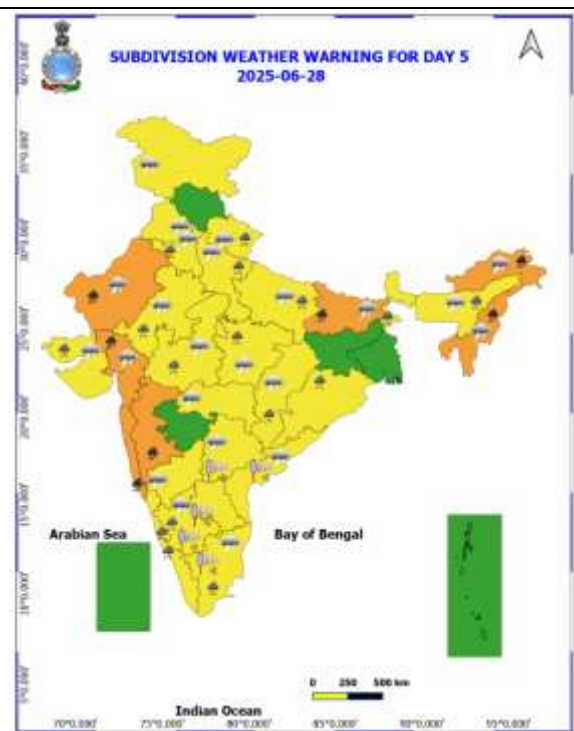
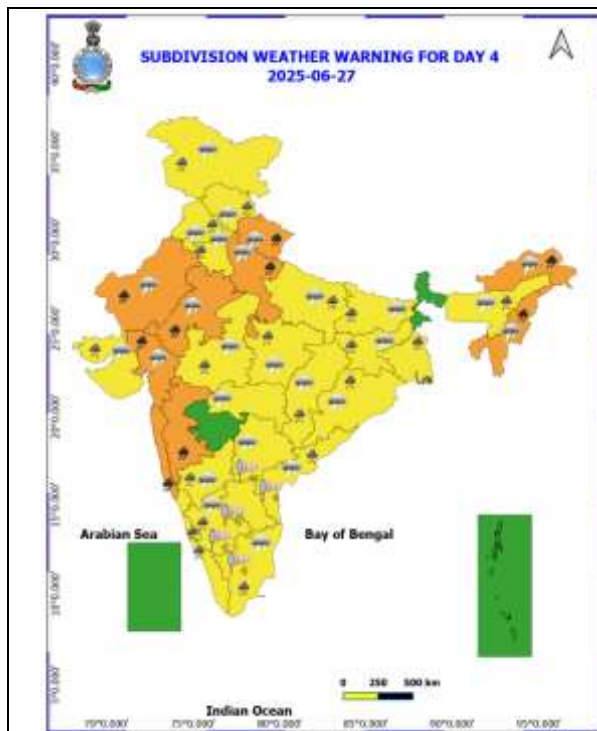
Realised Gusty Winds (kmph) During Past 24hours ending at 0830 hrs IST of today the 24th June:

- ❖ **Madhya Maharashtra:** Karad (SATARA) - 72 Kmph, Karjat (RAIGAD)-67 KMPH, Mahabaleshwar- 63 Kmph.;
- ❖ **Marathwada:** Beed(Ambejogai)-56 Kmph, Dharashiv(50 Kmph),
- ❖ **Andaman & Nicobar Islands:** Swarajdeep-54,Vijaypuram-58,Shaheed deep-39;
- ❖ **Konkan:** Santacruz (MUMBAI) - 48 kmph.;
- ❖ **Himachal Pradesh:** Kukumseri-46, Bajaura-41;
- ❖ **Haryana:** JIND=46; HISAR=39; BHIWANI=37; KAITHAL=33; KARNAL=31; SONIPAT, KURUKSHETRA & YAMUNANAGAR=30;
- ❖ **West Madhya Pradesh:** SHIVPURI 46;
- ❖ **Punjab:** HOSHIARPUR=44; ROPAR=33; MOHALI & MOGA=31;

| Table-1 | | | | | | | | |
|--------------------------|--|---------|---------|---------|---------|---------|---------|---------|
| 7 Days Rainfall Forecast | | | | | | | | |
| S.No. | Subdivision | 24- Jun | 25- Jun | 26- Jun | 27- Jun | 28- Jun | 29- Jun | 30- Jun |
| | | Day 1 | Day 2 | Day 3 | Day 4 | Day 5 | Day 6 | Day 7 |
| 1 | ANDAMAN & NICOBAR ISLANDS | WS | FWS | FWS | FWS | WS | WS | FWS |
| 2 | ARUNACHAL PRADESH | WS | FWS | FWS | FWS | WS | WS | WS |
| 3 | ASSAM & MEHGHALAYA | WS | FWS | FWS | FWS | FWS | FWS | FWS |
| 4 | NAGALAND, MANIPUR, MIZORAM AND TRIPURA | FWS | FWS | FWS | FWS | FWS | FWS | FWS |
| 5 | SUB HIMALAYAN WEST BENGAL & SIKKIM | WS | FWS | FWS | WS | WS | WS | WS |
| 6 | GANGETIC WEST BENGAL | FWS | WS | WS | WS | WS | FWS | FWS |
| 7 | ODISHA | WS | WS | WS | FWS | FWS | SCT | SCT |
| 8 | JHARKHAND | WS | WS | WS | WS | FWS | FWS | FWS |
| 9 | BIHAR | FWS | SCT | SCT | SCT | FWS | FWS | FWS |
| 10 | EAST UTTAR PRADESH | SCT | FWS | FWS | WS | WS | WS | WS |
| 11 | WEST UTTAR PRADESH | SCT | FWS | WS | WS | WS | WS | WS |
| 12 | UTTARAKHAND | FWS | WS | WS | WS | FWS | WS | WS |
| 13 | HARYANA, CHANDIGARH & DELHI | SCT | FWS | WS | FWS | FWS | FWS | FWS |
| 14 | PUNJAB | SCT | FWS | WS | FWS | FWS | FWS | FWS |
| 15 | HIMACHAL PRADESH | FWS | WS | WS | WS | FWS | FWS | FWS |
| 16 | JAMMU AND KASHMIR AND LADAKH | SCT | WS | WS | WS | SCT | SCT | SCT |
| 17 | WEST RAJASTHAN | SCT | ISOL | SCT | FWS | FWS | FWS | SCT |
| 18 | EAST RAJASTHAN | FWS | FWS | FWS | FWS | FWS | FWS | SCT |
| 19 | WEST MADHYA PRADESH | WS | WS | WS | WS | FWS | FWS | FWS |
| 20 | EAST MADHYA PRADESH | WS | WS | WS | WS | WS | FWS | FWS |
| 21 | GUJRAT REGION | WS | WS | WS | WS | WS | WS | WS |
| 22 | SAURASHTRA & KUTCH | WS | WS | WS | WS | WS | WS | WS |
| 23 | KONKAN & GOA | WS | WS | WS | WS | WS | WS | WS |
| 24 | MADHYA MAHARASHTRA | SCT | SCT | SCT | SCT | SCT | SCT | SCT |
| 25 | MARATHWADA | ISOL | ISOL | ISOL | ISOL | ISOL | ISOL | ISOL |
| 26 | VIDARBHA | WS | WS | FWS | FWS | SCT | SCT | SCT |
| 27 | CHHATTISGARH | WS | WS | WS | WS | WS | FWS | FWS |
| 28 | COASTAL ANDHRA PRADESH | FWS | SCT | SCT | FWS | FWS | SCT | SCT |
| 29 | TELANGANA | SCT | ISOL | ISOL | ISOL | ISOL | ISOL | ISOL |
| 30 | RAYALASEEMA | ISOL | ISOL | ISOL | ISOL | ISOL | ISOL | ISOL |
| 31 | TAMILNADU & PUDUCHERRY | ISOL | ISOL | SCT | SCT | SCT | ISOL | ISOL |
| 32 | COSTAL KARNATAKA | WS | WS | WS | WS | WS | WS | WS |
| 33 | NORTH INTERIOR KARNATAKA | SCT | SCT | SCT | FWS | SCT | SCT | SCT |
| 34 | SOUTH INTERIOR KARNATAKA | FWS | FWS | FWS | WS | FWS | SCT | SCT |
| 35 | KERALA AND MAHE | WS | WS | WS | WS | WS | FWS | FWS |
| 36 | LAKSHADWEEP | FWS | WS | WS | WS | WS | FWS | FWS |

- As the lead period increases forecast accuracy decreases.





- Action may be taken based on ORANGE AND REDCOLOUR warnings.
- Vulnerable regions likely urban and hilly areas action may be initiated for heavy rainfall warning.
- As the lead period increases forecast accuracy decreases.

Detailed districtwise Multi Hazard weather warning for next five days available at
<https://mausam.imd.gov.in/responsive/districtWiseWarningGIS.php>

Weather forecast over Delhi/NCR during 24rd to 27th June 2025

Past Weather:

There has been no large change in the minimum and rise in maximum temperature up to 1 to 2°C over Delhi/NCR during the past 24 hours. The maximum and minimum temperatures over Delhi were around 36 to 37 °C and 25 to 28°C, respectively. The minimum temperatures were below normal by 1 to 3 °C, and the maximum temperatures were below normal up to 2 to 4°C. Generally cloudy sky conditions with predominant surface wind from the east direction with wind speeds up to 20 kmph gusty to 35 kmph prevailed during the past 24 hours. Partly cloudy sky conditions with wind speed less than 06 kmph from a variable direction prevailed over the region in the forenoon today.

Weather Forecast:

24.06.2025: Partly cloudy sky. Very light to light rain/thunderstorm/lightning accompanied with gusty winds 30 - 40 kmph. The maximum temperatures over Delhi are likely to be in the range of 35 to 37°C. The maximum temperature will be below normal by up to 1 - 3°C. The predominant surface wind will likely be from the southeast direction with a wind speed of less than 15 kmph in the afternoon. The wind speed will gradually increase becoming 15-18 kmph from the southeast direction during evening and night.

25.06.2025: Generally cloudy sky. Light to Moderate rain/thunderstorm/lightning accompanied with gusty winds 30 - 40 kmph. The maximum and minimum temperatures over Delhi are likely to be in the range of 33 to 35°C and 26 to 28°C respectively. The minimum temperature will be below normal up to 1 to 2 °C and the maximum temperature will be below normal up to 3 to 5°C. The predominant surface wind will likely be from the southeast direction with a wind speed of less than 10 kmph during the morning hours. The wind speed will gradually increase becoming 10-15 kmph from the southeast direction in the afternoon. It will increase becoming less than 25 kmph from the southeast direction during evening and night.

26.06.2025: Generally cloudy sky. Very light to light rain/thunderstorm/lightning accompanied with gusty winds 30 - 40 kmph. The maximum and minimum temperatures over Delhi are likely to be in the range of 33 to 35°C and 26 to 28°C, respectively. The minimum temperature will be below normal up to 1 to 2°C, and the maximum temperature will be below normal up to 3 to 5°C. The predominant surface wind will likely be from the east direction with a wind speed of less than 20 kmph during the morning hours. The wind speed will gradually decrease becoming less than 15 kmph from the southeast direction in the afternoon. It will increase to less than 20 kmph from the northeast direction during the evening and night.

27.06.2025: Generally cloudy sky. Light to Moderate rain/thunderstorm/lightning accompanied with gusty winds 30 - 40 kmph. The maximum and minimum temperatures over Delhi are likely to be in the range of 33 to 35°C and 26 to 28°C, respectively. The minimum temperature will be below normal up to 1 to 2 °C, and the maximum temperature will be below normal up to 3 to 5°C. The predominant surface wind will likely be from the northeast direction with a wind speed of less than 15 kmph during the morning hours. The wind speed will gradually increase becoming less than 20 kmph from the northeast direction in the afternoon. It will increase to less than 25 kmph from the northeast direction during the evening and night.

Impact expected and Action Suggested due to thunderstorm with lightning/gusty winds:

- Be cautious and take precautionary measures, though there is the likelihood of thunderstorm/lightning and gusty winds (speed 40 – 50 kmph) temporarily reaching 60 kmph during thunderstorm with dust rising surface winds.
- Breaking of tree branches, uprooting of large avenue trees, Large dead limbs blown from trees, Damage to standing crops, Minor to major damage to power and communication lines due to breaking of branches, Partial damage to vulnerable structures due to strong winds, Loose objects may fly.
- People are advised to keep a watch on the weather for worsening conditions and be ready to move to safer places accordingly, stay indoors, close windows & doors and avoid travel if possible, take safe shelters; do not take shelter under trees, do not lie on concrete floors and do not lean against concrete walls, unplug electrical/ electronic appliances, immediately get out of water bodies, keep away from all the objects that conduct electricity.

Impact & Action Suggested due to extremely heavy falls/ very heavy rainfall:

- ✓ **Extremely heavy rainfall (>20 cm/24 hours) likely at isolated places over Konkan, Madhya Maharashtra, Gujarat Region on 24th June.**
- ✓ Very heavy rainfall over Konkan & Goa, Madhya Maharashtra, Gujarat region, Northeast India during 24th-30th June Uttarakhand during 24th-27th, West Rajasthan on 27th; East Rajasthan on 24th & 27th; Haryana, Punjab, Odisha on 25th & 26th, West Uttar Pradesh on 25th & 27th; Jammu-Kashmir-Ladakh-Gilgit-Baltistan-Muzaffarabad on 25th; Madhya Pradesh, Sub-Himalayan West Bengal & Sikkim on 24th; Bihar on 28th; Jharkhand on 26th, Interior Karnataka on 24th; Coastal Karnataka during 24th-26th June.

Impact Expected

- Localized Flooding of roads, water logging in low lying areas and closure of underpasses mainly in urban areas of the above region.
- Occasional reduction in visibility due to heavy rainfall.
- Disruption of traffic in major cities due to water logging in roads leading to increased travel time.
- Minor damage to kutcha roads.
- Possibilities of damage to vulnerable structure.
- Localized Landslides/Mudslides/landslips/mudslips/landsinks/mudsinks.
- Damage to horticulture and standing crops in some areas due to inundation.
- It may lead to riverine flooding in some river catchments (for riverine flooding please visit Web page of CWC)

Action Suggested

- Check for traffic congestion on your route before leaving for your destination.
- Follow any traffic advisories that are issued in this regard.
- Avoid going to areas that face the water logging problems often.
- Avoid staying in vulnerable structure.

Impact expected and action suggested due to isolated thunderstorm with lightning over Bihar, Jharkhand on 24th June.

Impact expected:

- Breaking of tree branches, uprooting of large avenue trees. Large dead limbs blown from trees. Damage to Standing crops.
- Minor to Major damage to banana and papaya trees.
- Minor to major damage to power and communication lines due to breaking of branches.
- Strong wind/hail may damage plantation, horticulture and standing crops.
- Partial damage to vulnerable structures due to strong winds.
- Minor damage to kutcha houses/walls and huts.
- Loose objects may fly.

Action suggested:

- People are advised to keep a watch on the weather for worsening conditions and be ready to move to safer places accordingly.
- Stay indoors, close windows & doors and avoid travel if possible.
- Take safe shelters; do not take shelter under trees.
- Do not lie on concrete floors and do not lean against concrete walls.
- Unplug electrical/ electronic appliances.
- Immediately get out of water bodies.
- Keep away from all the objects that conduct electricity.

**Agromet advisories for likely impact of Heavy / Heavy to Very Heavy / Extremely Heavy Rainfall
(Based on the IBF and advisories issued by different AMFUs)**

- In **Gujarat**, postpone nursery sowing of rice. Ensure proper drainage facilities in already sown rice nurseries, sugarcane fields, banana and mango plantations to prevent waterlogging. Provide support to sugarcane and banana to prevent lodging. In **Saurashtra & Kutch**, postpone sowing of *kharif* groundnut, cotton, sesame, pearl millet, green gram, black gram, cowpea, pigeon pea, maize, sorghum and vegetables. Drain out excess rain water from vegetable nurseries and horticultural plantations.
- In **West Madhya Pradesh**, Postpone harvesting of maize. Postpone sowing of pearl millet, soybean, pigeon pea and paddy nurseries. Make necessary arrangements to drain out excess water from vegetables and orchards to avoid waterlogging. In **Kymore Plateau and Satpura Hill Zone of East Madhya Pradesh**, harvest matured green gram and black gram crop and store in a safe place. In **Gird Zone of West Madhya Pradesh**, harvest matured maize crop and keep it in safe place. Postpone sowing of soybean and transplanting of chilli, tomato, brinjal etc. and ensure proper drainage in already sown / transplanted fields.
- In **East Rajasthan**, harvest the matured vegetables such as okra and cucurbits and store them in safe place. Make arrangement for draining out excess water from the fields of groundnut and green gram.
- In **Uttarakhand**, make proper drainage channels in rice nurseries, pigeon pea, groundnut, maize, soybean, barnyard millet and finger millet to avoid waterlogging. In **Bhabar and Tarai Zone of Uttarakhand**, harvest matured spring maize crop and vegetables (pumpkin, tomato, okra, chilli, French bean etc.) and store in safe place during clear weather.
- In **Sub-Montane and Low Hills Sub-Tropical Zone of Himachal Pradesh**, provide drainage in maize and vegetable fields. Strengthen the support for creepers and tall vegetable crops (tomato, capsicum etc.). In **Mid Hills Sub-Humid Zone of Himachal Pradesh**, harvest matured fruits of plum, pear and stonefruit to minimize losses due to heavy rains. Make proper drainage channels in the fields of maize, apple, pear, pomegranate, kiwi, cucumber and tomato to avoid waterlogging. Provide support to cucumber vines and tomato plants to prevent lodging.
- In **Sub-Himalayan West Bengal**, maintain proper drainage channels in rice nurseries and fields of jute and ginger to avoid water stagnation.
- In **Jharkhand**, make necessary arrangements to drain out excess water from already sown maize fields, rice and vegetable nurseries.
- In **Odisha**, ensure proper drainage from already sown rice nurseries, fields of maize and vegetables to prevent waterlogging. Cover rice and vegetable nurseries with plastic sheets to prevent washing away of seeds.
- In **Chhattisgarh**, ensure proper drainage in rice nurseries.
- In **Konkan & Goa** make arrangement to drain out excess water from rice nurseries, fields of finger millet, groundnut and orchards to prevent waterlogging. In **ghat areas of Madhya Maharashtra**, drain out excess water from rice nurseries and banana plantations to prevent waterlogging.
- In **Coastal Karnataka**, ensure proper drainage facilities in rice nurseries, banana, coconut and arecanut plantations to prevent water logging. In **South Interior Karnataka**, cover young seedlings of rice with plastic sheets or agro-shade nets to protect them from heavy rains. Provide adequate drainage to remove excess water from rice nurseries, coffee, cardamom, coconut and arecanut plantations to prevent water logging. Provide support to sugarcane and banana to prevent lodging. In **North Interior Karnataka**, drain out excess water from the crops which are at seedling stage to prevent water logging.
- In **Kerala**, ensure proper drainage facilities in rice nurseries, transplanted rice fields, coconut and banana plantations to prevent water logging. Undertake propping in banana to protect the plants from heavy rains.
- In **Assam**, keep the harvested produce of sesame, foxtail millet, *Boro* rice, banana and citrus at safer places. Ensure proper drainage in *Sali* rice nursery, maize and sugarcane fields, arecanut and coconut plantations to prevent waterlogging. In **Barak Valley Zone of Assam**, postpone nursery sowing of *Sali* rice.
- In **Meghalaya**, postpone nursery sowing of rice especially in valleys. Ensure proper drainage in the fields of maize, ginger, French bean, cowpea, vegetables and around rice nurseries to prevent waterlogging. Provide strong bamboo stakes or trellis support to cow pea, cucumber and bottle gourd to prevent vines from trailing on wet ground. Provide support to banana plant to prevent lodging.
- In **Arunachal Pradesh**, keep the harvested produce of soybean and vegetables such as chilli and okra at a safer place. Ensure proper drainage in rice nurseries, kiwi and apple orchards to avoid waterlogging.
- In **Nagaland**, avoid transplanting of TRC/WRC rice. Postpone sowing of soybean. Provide proper staking to vine type plants.

Livestock / Fishery

- Keep the animals inside the shed during heavy rainfall and provide them balanced feed.
- Store feed and fodder in a safe place to prevent spoilage.
- Construct an outlet with proper netting around the ponds to drain out excess water, thereby preventing fish from escaping in case of overflow.

**Agromet advisories for likely impact of Thunderstorm / Gusty Winds / Squally Winds
(Based on the IBF and advisories issued by different AMFUs)**

- Provide mechanical support to horticultural crops and staking or support to vegetables and young fruit plants / fruit-bearing plants to avoid lodging due to strong winds.

Flash flood guidance:

24 hours Outlook for the Flash Flood Risk (FFR) till 1130 IST of 25-06-2025 :

Low to Moderate flash flood risk likely over few watersheds & neighbourhoods of following Met Sub-divisions during next 24 hours.

Arunachal Pradesh - Changlang, Dibang Valley, East Kameng, Lower Subansiri, Papum-Pare, Tirap, West Kameng, Anjaw and Kurung Kumey districts.

Nagaland Mizoram Manipur Tripura (NMMT) –

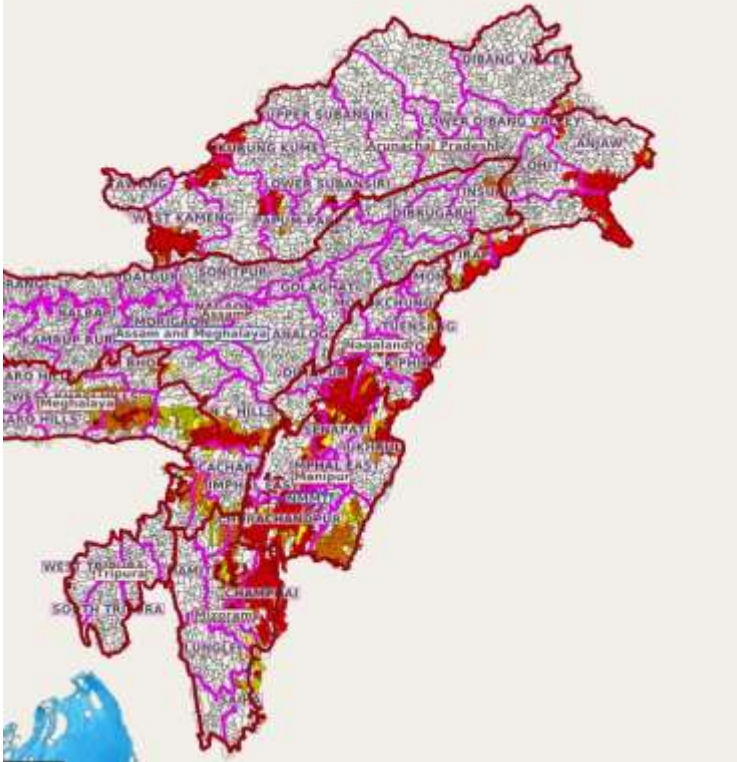
Manipur- Bishnupur, Chandel, Churachandpur, Imphal West, Senapati, Tamenglong, Ukhrul,

Mizoram- Aizawl, Champhai, Saiha, Serchhip,

Nagaland- Dimapur, Kiphire, Kohima, Mon, Peren, Phek, Tuensang and Zunheboto districts.

Surface runoff/ Inundation may occur at some fully saturated soils & low-lying areas over Area of Concern (AoC) as shown in map due to expected rainfall occurrence in next 24 hours.

Product: GFS FFR | Timescale: 24-hr | Region: "INDIA"
Product Date: 2025-06-24 06:00 UTC | Valid Date: 2025-06-25 06:00 UTC



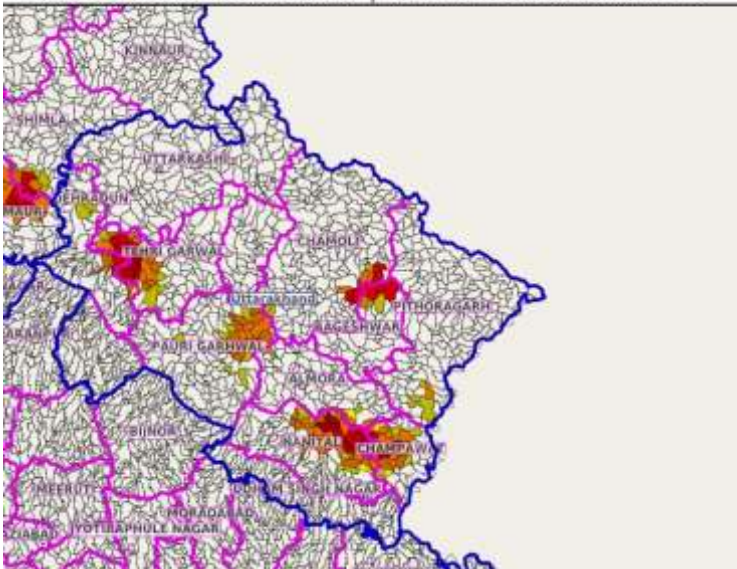
24 hours Outlook for the Flash Flood Risk (FFR) till 1130 IST of 25-06-2025 :

Low to Moderate flash flood risk likely over few watersheds & neighbourhoods of following Met Sub-divisions during next 24 hours.

Uttarakhand - Bageshwar, Chamoli, Champawat, Dehradun, Nanital, Pauri Garhwal, Pithoragarh and Tehri Garwal districts.

Surface runoff/ Inundation may occur at some fully saturated soils & low-lying areas over Area of Concern (AoC) as shown in map due to expected rainfall occurrence in next 24 hours.

Product: GFS FFR | Timescale: 24-hr | Region: "INDIA"
Product Date: 2025-06-24 06:00 UTC | Valid Date: 2025-06-25 06:00 UTC



Legends & abbreviations:

- ❖ **Heavy Rain:**64.5-115.5mm; **Very Heavy Rain:**115.6-204.4mm; **Extremely Heavy Rain:** >204.4mm.
- ❖ **Obsy:** Observatory; Automatic Weather Station; **ARG:** Automatic Rain Gauge; **dist:** District; **NH:** National Highway; **KVK:** Krishi Vigyan Kendra; **DVC:** Damodar Valley Corporation; **PTO:** Part Time Office, **Aero:** Aerodrome, **IAF:** Indian Air Force.
- ❖ **Region wise classification of meteorological Sub-Divisions:**
 - **Northwest India:** Western Himalayan Region (Jammu-Kashmir-Ladakh-Gilgit-Baltistan-Muzaffarabad, Himachal Pradesh and Uttarakhand); Punjab, Haryana-Chandigarh-Delhi; West Uttar Pradesh, East Uttar Pradesh, West Rajasthan and East Rajasthan.
 - **Central India:** West Madhya Pradesh, East Madhya Pradesh, Vidarbha and Chhattisgarh.
 - **East India:** Bihar, Jharkhand, Sub-Himalayan West Bengal & Sikkim; Gangetic West Bengal, Odisha and Andaman & Nicobar Islands.
 - **Northeast India:** Arunachal Pradesh, Assam & Meghalaya and Nagaland, Manipur, Mizoram & Tripura.
 - **West India:** Gujarat Region, Saurashtra & Kutch, Konkan & Goa, Madhya Maharashtra and Marathawada.
 - **South India:** Coastal Andhra Pradesh & Yanam, Telangana, Rayalaseema, Coastal Karnataka, North Interior Karnataka, South Interior Karnataka, Kerala & Mahe, Tamil Nadu, Puducherry & Karaikal and Lakshadweep.

LEGENDS

1. अंडमान और निकोबार द्वीपसमूह

2. अरुणाचल प्रदेश

3. असम और मेघालय

4. नागालैंड, मणिपुर, मिजोरम और त्रिपुरा

5. उप-हिमालयी पश्चिम बंगाल और सिक्किम

6. गंगीय पश्चिम बंगाल

7. ओडिशा

8. झारखंड

9. बिहार

10. पूर्वी उत्तर प्रदेश

11. पश्चिम उत्तर प्रदेश

12. उत्तराखंड

13. हरियाणा, चंडीगढ़ और दिल्ली

14. पंजाब

15. हिमाचल प्रदेश

16. जम्मू और कश्मीर और लद्दाख

17. पश्चिम राजस्थान

18. पूर्वी राजस्थान

19. पश्चिम मध्य प्रदेश

20. पूर्वी मध्य प्रदेश

21. गुजरात

22. सौराष्ट्र

23. कोंकण और गोवा

24. मध्य महाराष्ट्र

25. मराठवाड़ा

26. विदर्भ

27. छत्तीसगढ़

28. तटीय आंध्र प्रदेश और यनम

29. तेलंगाना

30. रायलसीमा

31. तमिलनाडु, पुडुचेरी और कराईकल

32. तटीय कर्नाटक

33. आंतरिक उत्तरी कर्नाटक

34. आंतरिक दक्षिणी कर्नाटक

35. केरल और माहे

36. लक्षद्वीप



1. Andaman & Nicobar Islands

2. Arunachal Pradesh

3. Assam & Meghalaya

4. Nagaland, Manipur, Mizoram & Tripura

5. Sub-Himalayan West Bengal & Sikkim

6. Gangetic West Bengal

7. Odisha

8. Jharkhand

9. Bihar

10. East Uttar Pradesh

11. West Uttar Pradesh

12. Uttarakhand

13. Haryana, Chandigarh & Delhi

14. Punjab

15. Himachal Pradesh

16. Jammu & Kashmir and Ladakh

17. West Rajasthan

18. East Rajasthan

19. West Madhya Pradesh

20. East Madhya Pradesh

21. Gujarat

22. Saurashtra

23. Konkan & Goa

24. Madhya Maharashtra

25. Marathwada

26. Vidarbha

27. Chhattisgarh

28. Coastal Andhra Pradesh & Yanam

29. Telangana

30. Rayalaseema

31. Tamilnadu, Puducherry & Karaikal

32. Coastal Karnataka

33. North Interior Karnataka

34. South Interior Karnataka

35. Kerala & Mahe

36. Lakshadweep

SPATIAL DISTRIBUTION (% of Stations reporting)

| % Stations | Category | % Stations | Category |
|------------|-------------------------------------|------------|------------------------------|
| 76-100 | Widespread (WS/Most Places) | 26-50 | Scattered (SCT/A Few Places) |
| 51-75 | Fairly Widespread (FWS/Many Places) | 1-25 | Isolated (ISOL) |



Fog



Heavy Snow



Cold Wave



Heavy Rain



Dust Storm



Cold Day



Very Heavy Rain



Heat Wave



Ground Frost



Extremely Heavy Rain



Warm Night



Thunder & Lightning



Hot Day



Hailstorm



Hot & Humid



Dust Raising Winds



Strong Surface Winds

COLOUR CODED WARNING

No Warning (No Action)

Watch (Be Aware)

Alert (Be Prepared To Take Action)

Warning (Take Action)

Probabilistic Forecast

| Terms | Probability of Occurrence (%) |
|-------------|-------------------------------|
| Unlikely | < 25 |
| Likely | 25 - 50 |
| Very Likely | 50 - 75 |
| Most Likely | > 75 |

* Red colour warning does not mean "Red Alert", Red colour warning means "Take Action".

Forecast and Warning for any day is valid from 0830 hours IST of day till 0830 hours IST of next day.

For more details, kindly visit <https://mausam.imd.gov.in> or contact: 011-2434-4599

(Service to the Nation since 1875)

DEFINITION/CRITERIA

Rain/ Snow *

Heavy: 64.5 to 115.5 mm/cm *
Very Heavy: 115.6 to 204.4 mm/cm *
Extremely Heavy: > 204.4 mm/cm *

Heat Wave

When maximum temperature of a station reaches $\geq 40^{\circ}\text{C}$ for plains and $\geq 30^{\circ}\text{C}$ for hilly regions
(a) Based on Departure from normal

Heat Wave: Maximum Temperature Departure from normal 4.5°C to 6.4°C .

Severe Heat Wave: Maximum Temperature Departure from normal $\geq 6.5^{\circ}\text{C}$

(b). Based on Actual maximum temperature

Heat Wave: When actual maximum temperature $\geq 45^{\circ}\text{C}$.

Severe Heat Wave: When actual maximum temperature $\geq 47^{\circ}\text{C}$.

(c). Criteria for heat wave for coastal stations

When maximum temperature departure is $> 4.5^{\circ}\text{C}$ from normal. Heat Wave may be described provided maximum temperature $\geq 37^{\circ}\text{C}$.

Warm Night

When maximum temperature remains 40°C

Warm Night: When minimum temperature departure 4.5°C to 6.4°C .

Severe Warm Night: When minimum temperature departure $> 6.4^{\circ}\text{C}$.

Cold Wave

When minimum temperature of a station $\leq 10^{\circ}\text{C}$ for plains and $\leq 0^{\circ}\text{C}$ for hilly regions.

(a). Based on departure

Cold Wave: Minimum Temperature Departure from normal -4.5°C to -6.4°C .

Severe Cold Wave: Minimum Temperature Departure from normal $\leq -6.5^{\circ}\text{C}$

(b) Based on actual Minimum Temperature (for Plains only)

Cold Wave: When Minimum Temperature is $\leq 4.0^{\circ}\text{C}$

Severe Cold Wave: When Minimum Temperature is $\leq 2.0^{\circ}\text{C}$

(c) For Coastal Stations

When Minimum Temperature departure is $\leq -4.5^{\circ}\text{C}$ & actual Minimum Temperature is $\leq 15^{\circ}\text{C}$

Cold Day

When minimum temperature of a station $\leq 10^{\circ}\text{C}$ for plains and $\leq 0^{\circ}\text{C}$ for hilly regions
Based on departure

Cold Day: Maximum Temperature Departure from normal -4.5°C to -6.4°C .

Severe Cold Day: Maximum Temperature Departure from normal $\leq -6.5^{\circ}\text{C}$

Fog

Phenomenon of small droplets suspended in air and the horizontal visibility $< 1\text{km}$

Moderate Fog: When the visibility between 500-200 metres

Dense Fog: when the visibility between 50- 200 metres

Very Dense Fog: when the visibility < 50 metres

Thunderstorm

Sudden electrical discharges manifested by a flash of light (Lightning) and a sharp rumbling sound (thunder)

Dust/Sand Storm

An ensemble of particles of dust or sand energetically lifted to great heights by a strong and turbulent wind.

Frost

Ice deposits on ground

Air temperature $\leq 4^{\circ}\text{C}$ (over Plains)

Squall

A strong wind that rises suddenly, lasts for atleast 1 minute.

Moderate: Wind speed 52-61 kmph

Severe: Wind speed 62-67 kmph

Very Severe: Wind speed > 67 kmph

Sea State

Effect of various waves in the sea over specific area

Rough to very rough: Wind speed 41-62 kmph (22-33 knots) & Wave height 2.5-6 metre

High to very high: Wind speed 63-117 kmph (34-63 knots) & Wave height 6-14 metre

Phenomenal: Wind speed > 117 kmph (> 63 knots) & Wave height > 14 metre

Cyclone

Cyclonic Storm: Wind speed 62-87 kmph (34-47 knots)

Severe Cyclonic Storm: Wind speed 88-117 kmph (48-63 knots)

Very Severe Cyclonic Storm: Wind speed 118-165 kmph (64 - 89 knots)

Extremely Severe Cyclonic Storm: Wind speed 166-220 kmph (90 -119 knots)

Super Cyclone Storm: Wind speed > 220 kmph (> 119 knots)

* Red colour warning does not mean "Red Alert", Red colour warning means "Take Action".

Forecast and Warning for any day is valid from 0830 hours IST of day till 0830 hours IST of next day.

For more details, kindly visit <https://mausam.imd.gov.in> or contact: 011-2434-4599

(Service to the Nation since 1875)

Hot and Humid: When maximum temperatures remain 3°C above normal along with the above normal relative humidity.